



15 Thomas Street Gillieston Heights NSW

4 2 2

Nestled on a large 809sqm parcel of land boasting a prized north-facing backyard that's just perfect for your kids and pets to frolic freely, this four-bedroom home boasts a practical design with a spacious lounge room, the heart of the home kitchen, a main bathroom, and a chic master ensuite all on a single level. The elevated position gifts picturesque rural scenery and distant mountain views, while the super convenient location is little more than 350m from Lovey's IGA, Sherwood café, medical centre, and childcare centre at Wallis Creek.

Indulge in year-round celebrations in your very own screened and covered sunroom or unwind on the expansive deck, soaking in garden views and basking in the winter sun. An impressive 20.11m frontage, boasting a double carport, hints at exciting future possibilities for your property.

Land Size : 809 sqm

View : <https://www.andrewmcgrathfn.com.au/sale/nsw/hunter-valley-lower/gillieston-heights/residential/house/7871976>



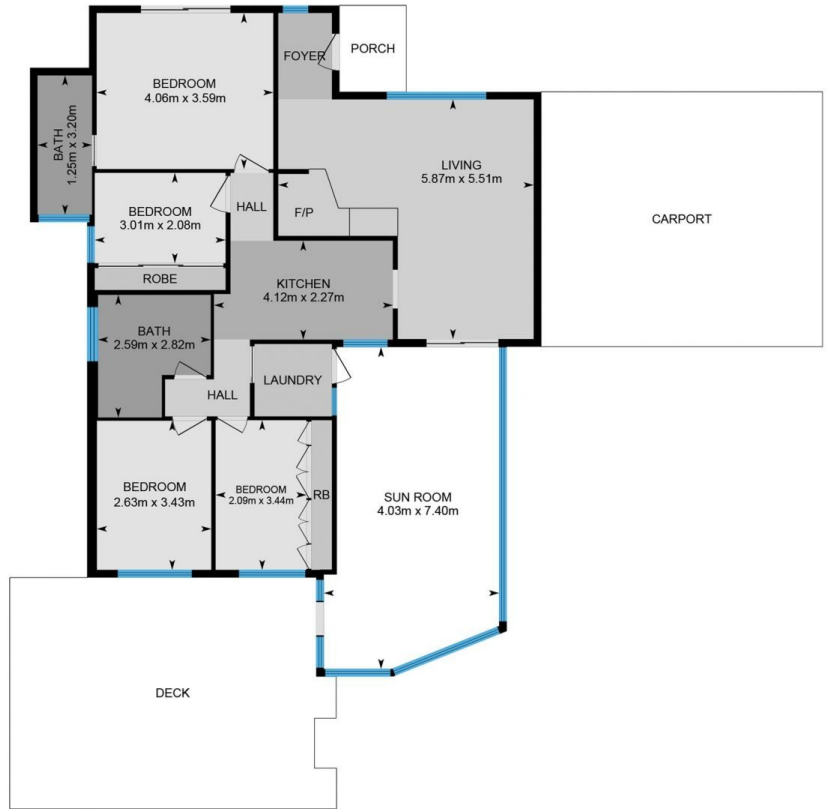
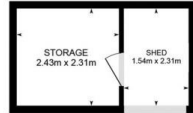
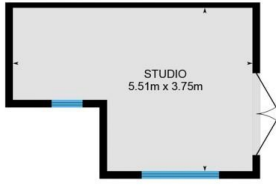
Rob O'Brien
02 4972 1066

15 Thomas St, Gillieston Heights, NSW

Main Floor Exterior Area 107.70 m²

Interior Area 99.22 m²

Excluded Area 29.46 m²



firstnational
REAL ESTATE

Andrew McGrath

Measurements are approximate and are to be used only as a guide